



Paxall

Paxall Clybourn Machinery
Sprinter® Machinery

Programmed for Productivity

SPECTRUM Series 324™

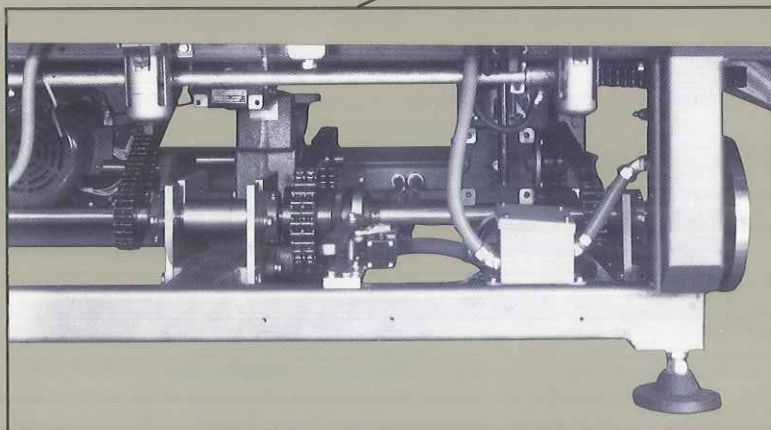
Accommodates Centers from 3 to 24 Inches

The SPECTRUM Series 324 is the product of 40 years of vertical cartoning expertise. With its rugged construction, versatility, reduced maintenance and higher production speeds the SPECTRUM can fulfill the demanding vertical cartoning requirements of today's packaging plants.

Designed for flexibility, the SPECTRUM signifies a new class of cartoning machinery. Standard features like our state-of-the-art rotary feeder, low friction long-wearing chain rails, enclosed gear drives, torque

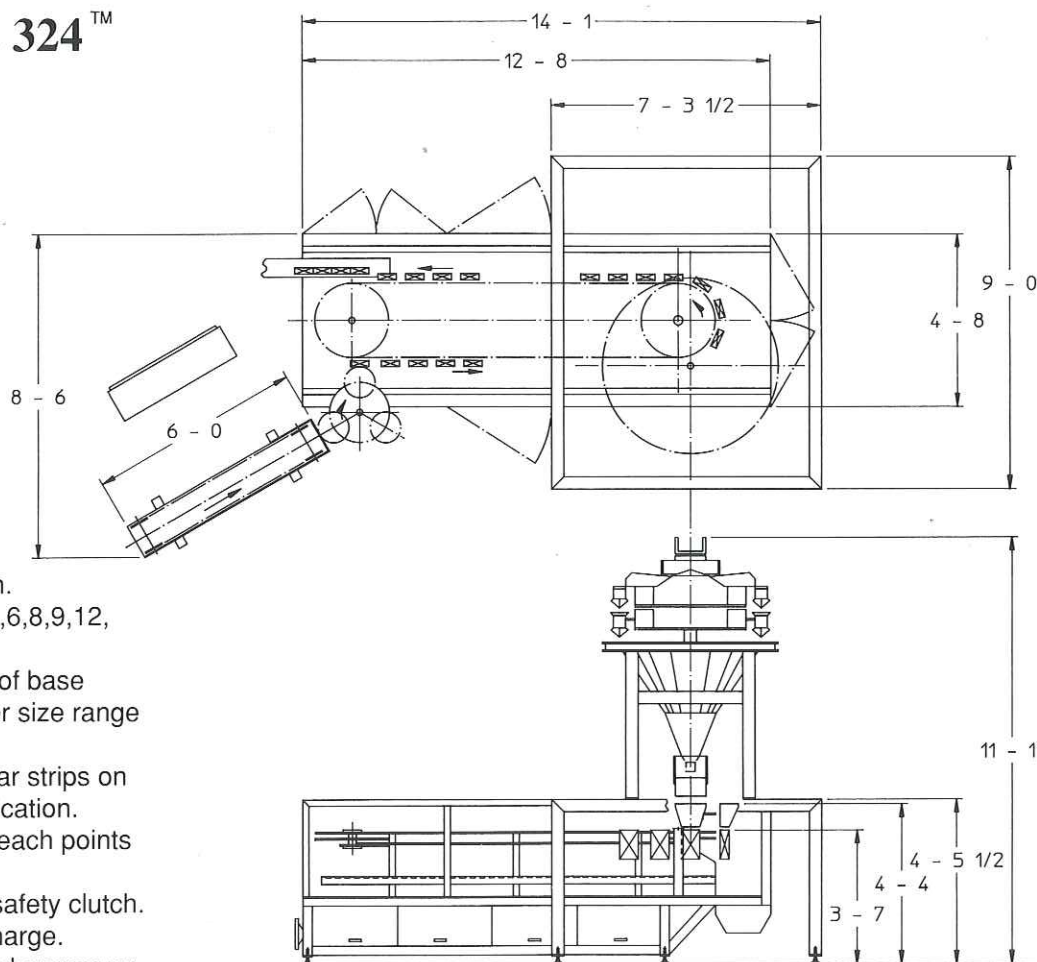
limiter, AC variable heavy duty motor drive and all-tubular welded frame insure that the SPECTRUM will provide years of dependable performance.

Exceptional versatility is designed into the SPECTRUM. The standard machine accommodates the widest range of carton sizes available on the market—from 3 to 24-inch centers. By interfacing the SPECTRUM with our complete range of product feeding and filling options, a precision cartoning system can be furnished to satisfy your specific requirements.



Paxall Clybourn Machinery

SPECTRUM Series 324™



Features

- Reduced operating costs.
- Reduced maintenance costs.
- Rugged, durable, quiet operation.
- Versatility: multiple centers: 3,4,6,8,9,12, 18 & 24.
- New rotary carton feeder is part of base machine frame, affording greater size range and easy adjustment.
- Sealed bearings and UHMW wear strips on chain blocks do not require lubrication.
- Cluster lube system for hard to reach points which require lubrication.
- Enclosed gear drives, overload safety clutch.
- Standard 90 degree carton discharge.
- Quick release handles for quick changeover.
- Modular frame design.
- Standard N.E.C. code with NEMA 12 enclosures.
- Wiring trough.
- LEXAN barrier with electrical interlocks.

Options

- Clockwise Operation.
- VENTURI vacuum system.
- Glue system: hot melt (gun or wheel), hot air, Valco cold glue gun and controls to suit.
- Tray conveyor with drive.
- Coupon feeder.
- Reverse fold carton closing mechanisms with glue systems.
- Product detection with low product carton reject system.

Dimensions are for illustrative purposes only.

- Open flap detection system with carton reject station.
- Adaptation for auger filling, seal spout insert, or scales.
- Special NEMA 4X electricals.
- Date coding or other coding systems.
- Controls interface with other equipment.
- CRT display.



Paxall

**Paxall Clybourn Machinery
Sprinter Machinery**

7515 North Linder Avenue
Skokie, Illinois 60077
Telephone: 312/677-7800
Telex: 28-9472
Telefax: 312/677-7139